

CCF Celebrates 19 Years of Pioneering Children's Palliative Care (CPC) Service: Our Service Model



兒童紓緩服務基金

Children's Palliative Care Foundation

直屬兒童癌症基金 An entity owned by Children's Cancer Foundation

1989 → **CCF established**

1990

1991

1992

1993

1994

1995

1996

1997

1998

Nov 1999

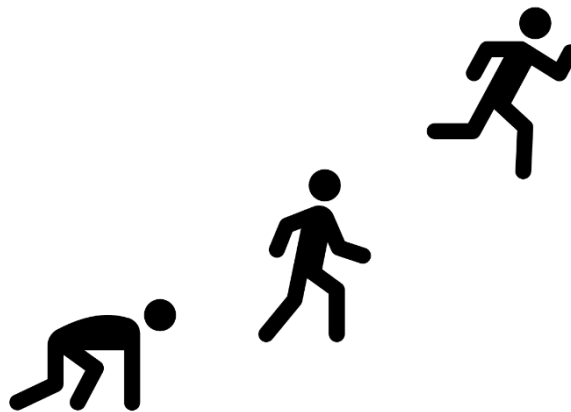
2018



兒童紓緩服務基金

Children's Palliative Care Foundation

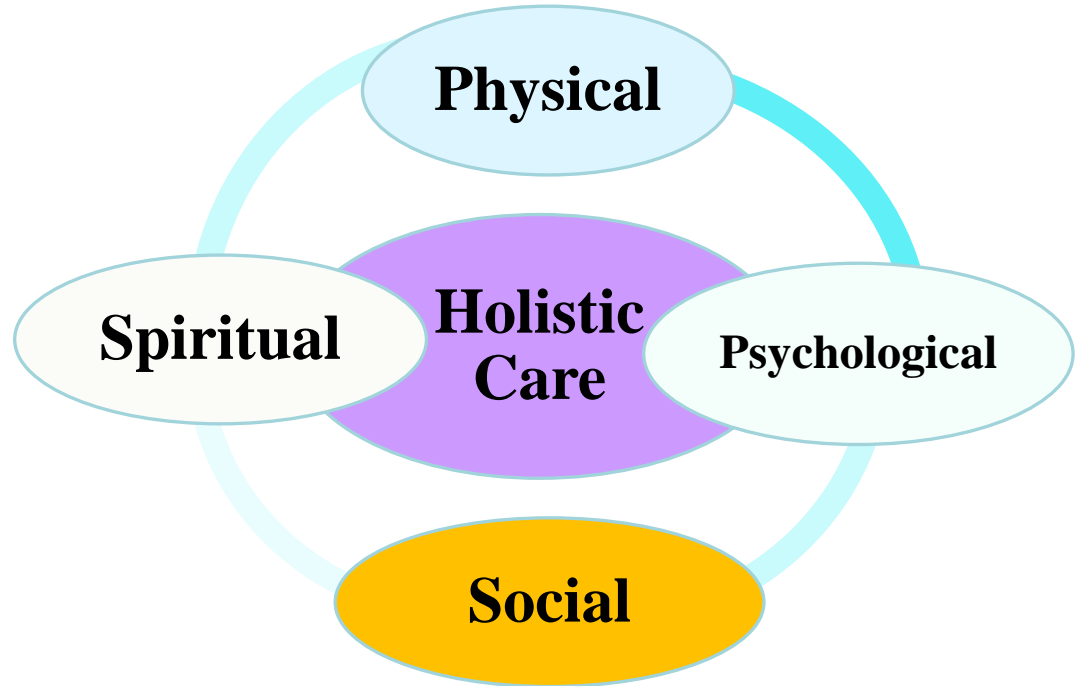
直屬兒童癌病基金 An entity owned by Children's Cancer Foundation



Established Palliative and Home Care Service

Aim of CCF Palliative and Home Care Service

**Enhance
quality of life**



Aim of CCF Palliative and Home Care Service

To provide specialized palliative nursing care for children with advanced cancer in their homes as an alternative to hospital care



Aim of CCF palliative and home care service



Children's Palliative Care Service is



Child-centred



Family-centred

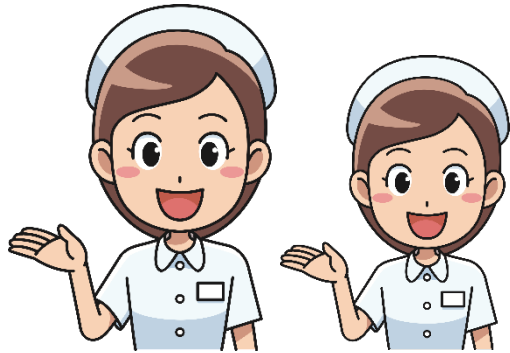
Our target patients and their family

醫院聯網、醫院及醫療機構分佈圖

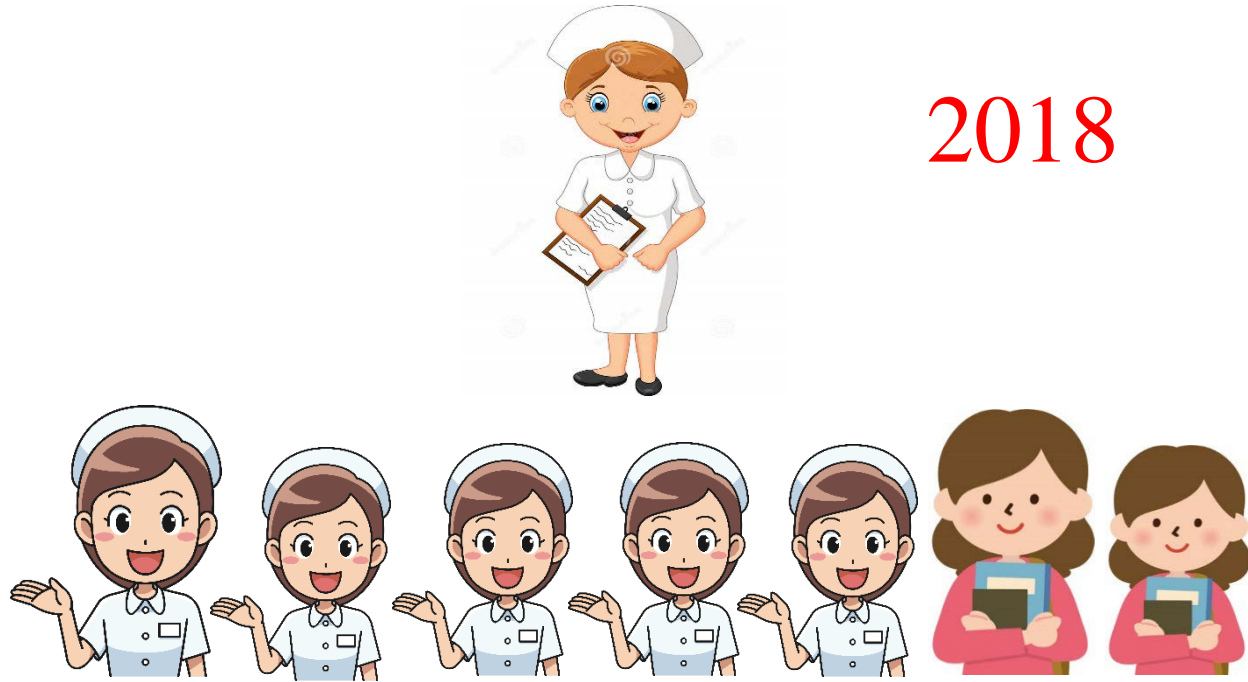


Structure of the team

1999



2018



Scope of service



Palliative nursing care
Symptom management

Support and advice on home care

End of life care



bereavement care

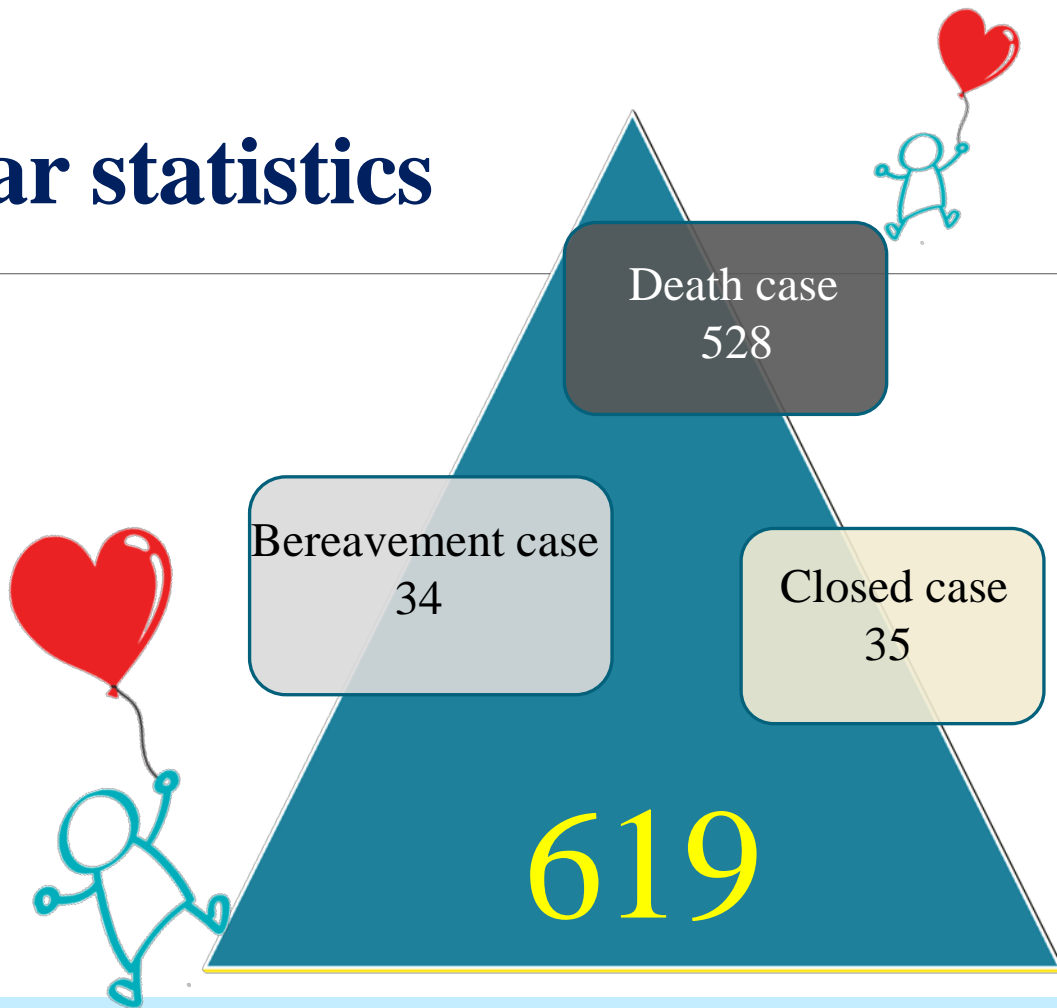
Psycho-social support



Enhancing quality of life

Walk along with the family

19-year statistics



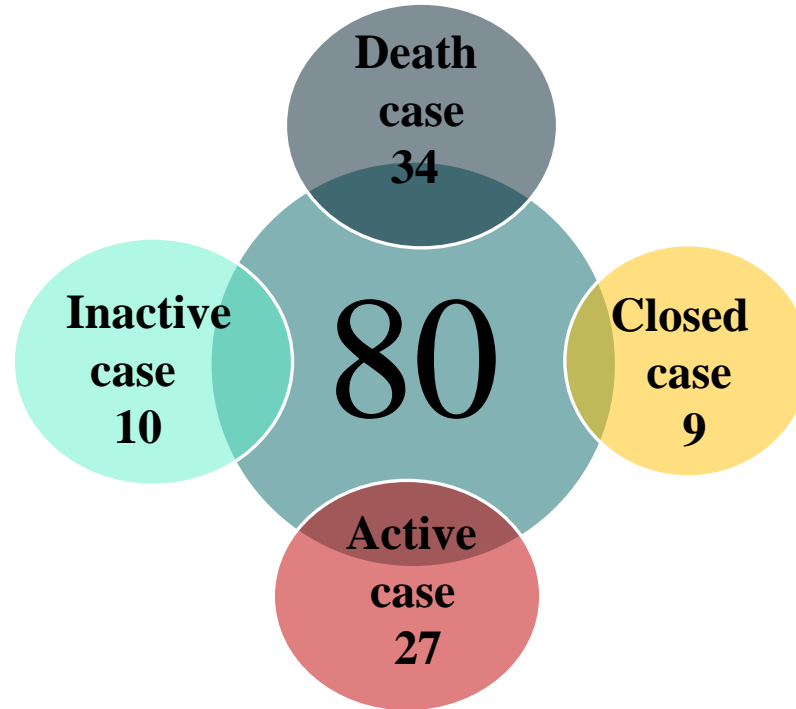


Since 2011

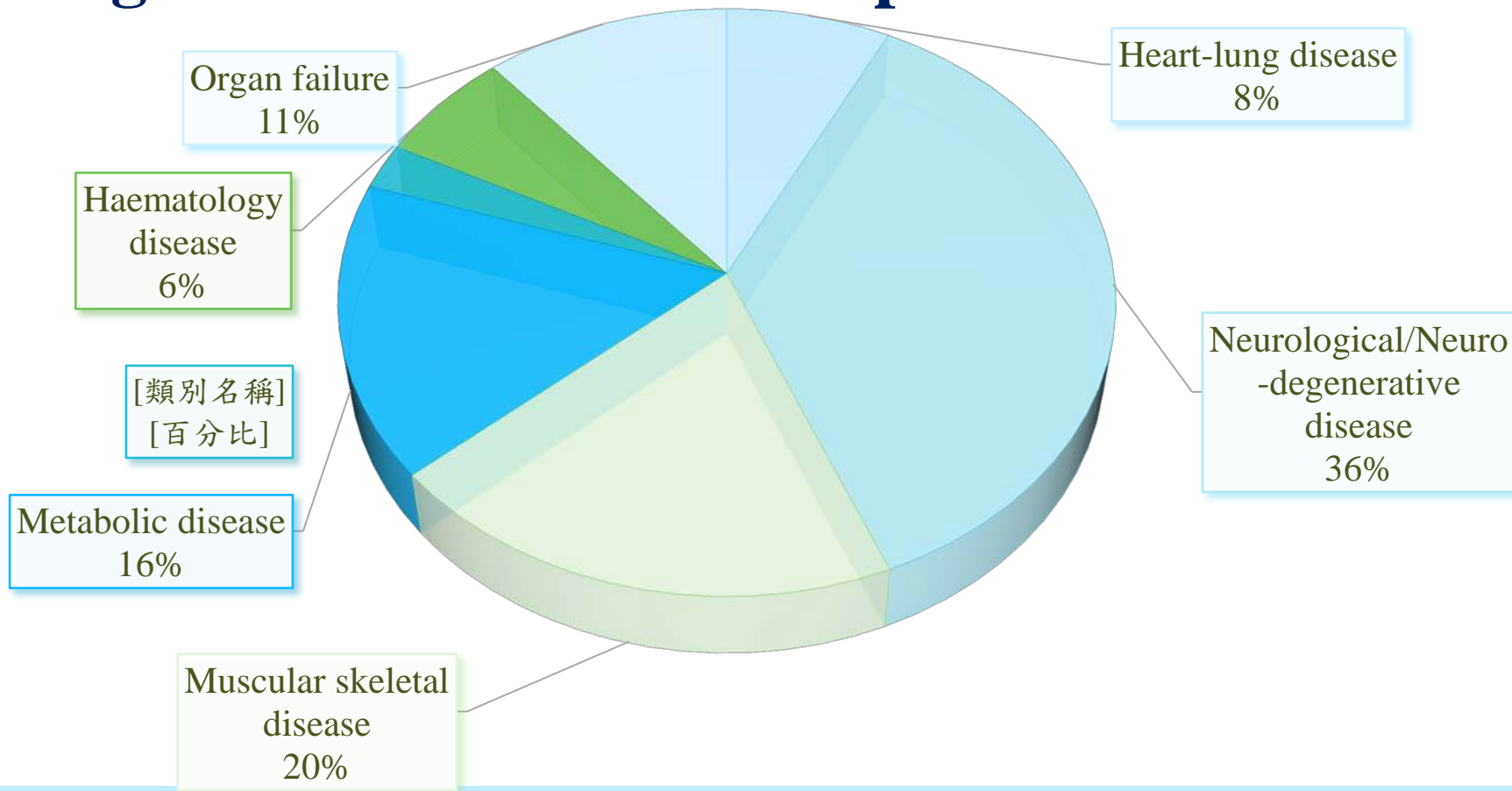
NON CANCER PATIENT PILOT PROJECT



Children's palliative care service for non-cancer patients (Pilot project) since 2011



Diagnosis of 80 non-cancer patients in 2011-2018



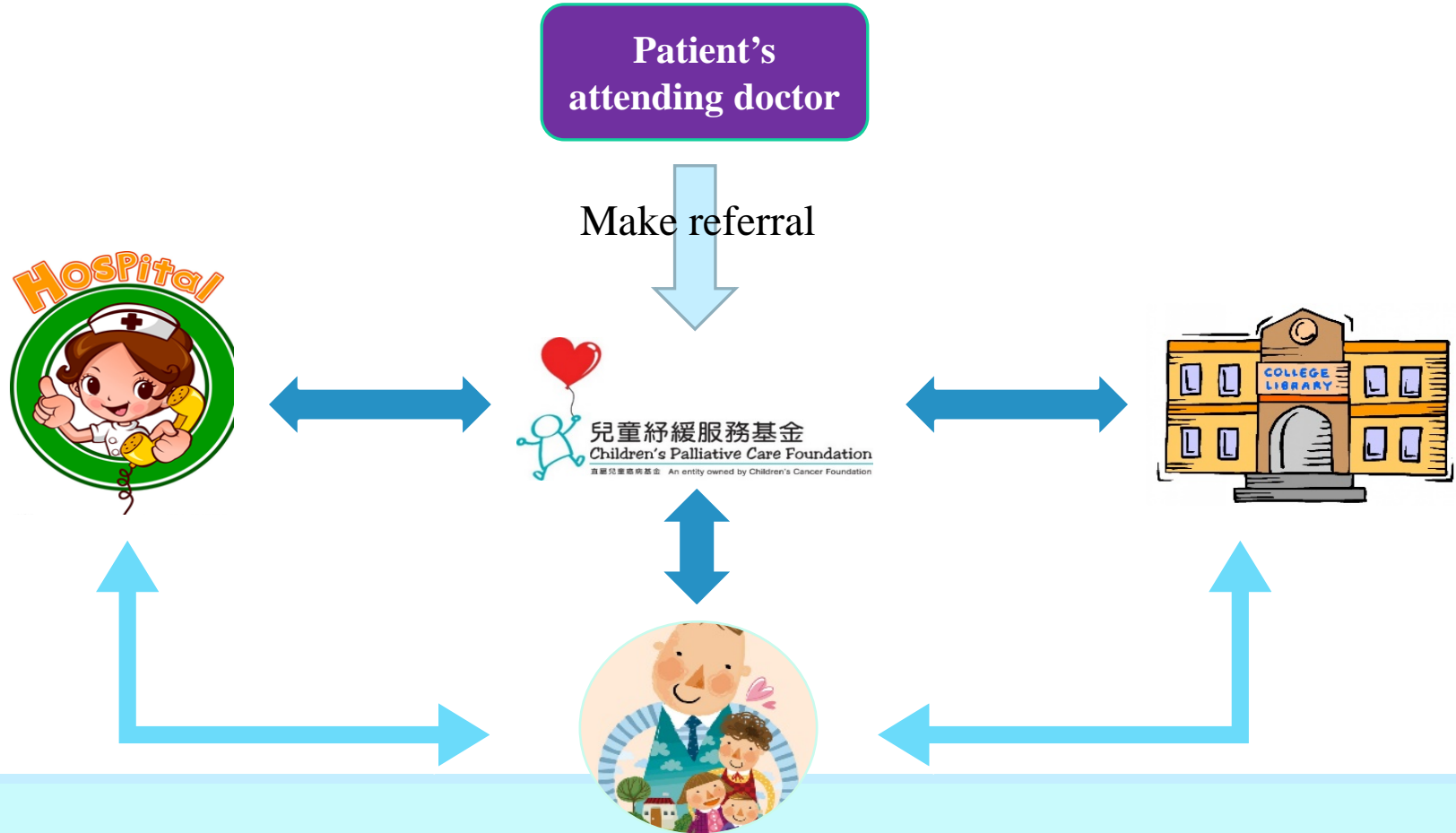
Our target patients and their family

醫院聯網、醫院及醫療機構分佈圖



★ Non-cancer patient
CPC service

Current service model

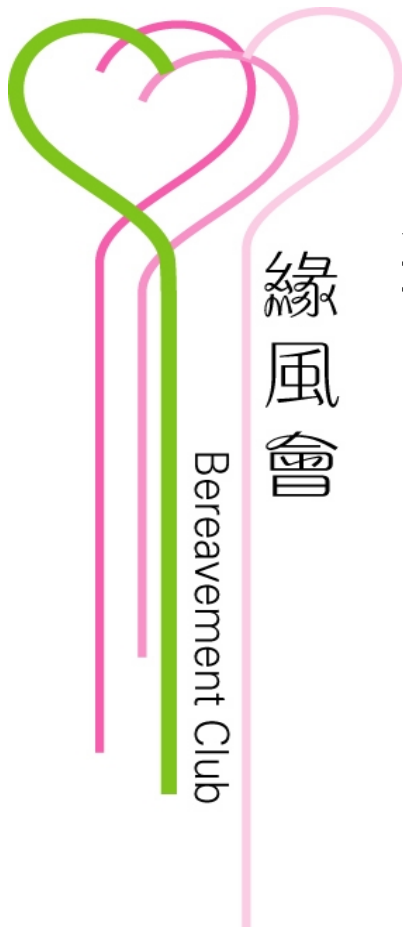


What we learned from the pilot project

The non-cancer patients who need CPC

- Different disease trajectory
- Rare disease & small population, not enough experience
- Difficult to predict life expectancy
- Chronic illness needs long term care, no respite care, family is stressful
- No concrete transitional plan to transfer child patients to adult services
- Need 24/7/365 home care support
- Minimal bereavement support services for families who loss a young child





Bereavement Club

緣 有緣世間相聚
風 無奈如風消逝
會 期望天家重會

March 2007

Bereavement care services

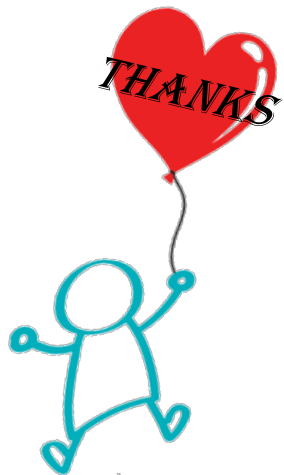


Balloon for funeral



#HATSON4CPC 2018





兒童紓緩服務基金

Children's Palliative Care Foundation

直屬兒童癌症基金 An entity owned by Children's Cancer Foundation